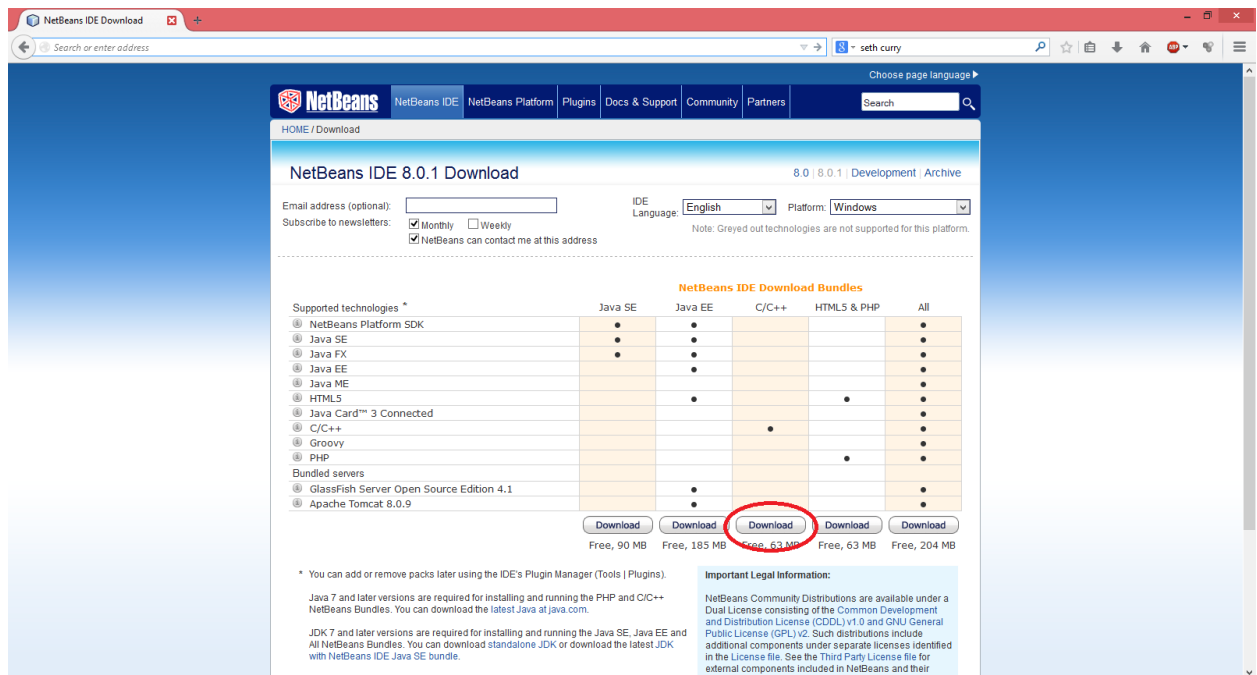


Installing Netbeans for C++

1. Go to <https://netbeans.org/downloads/>
2. Choose the third option.



3. Open the .exe file
4. Accept the License Agreement
5. Continue to click next until it begins installation. Afterwards click finish.
6. Go to <https://cygwin.com/>

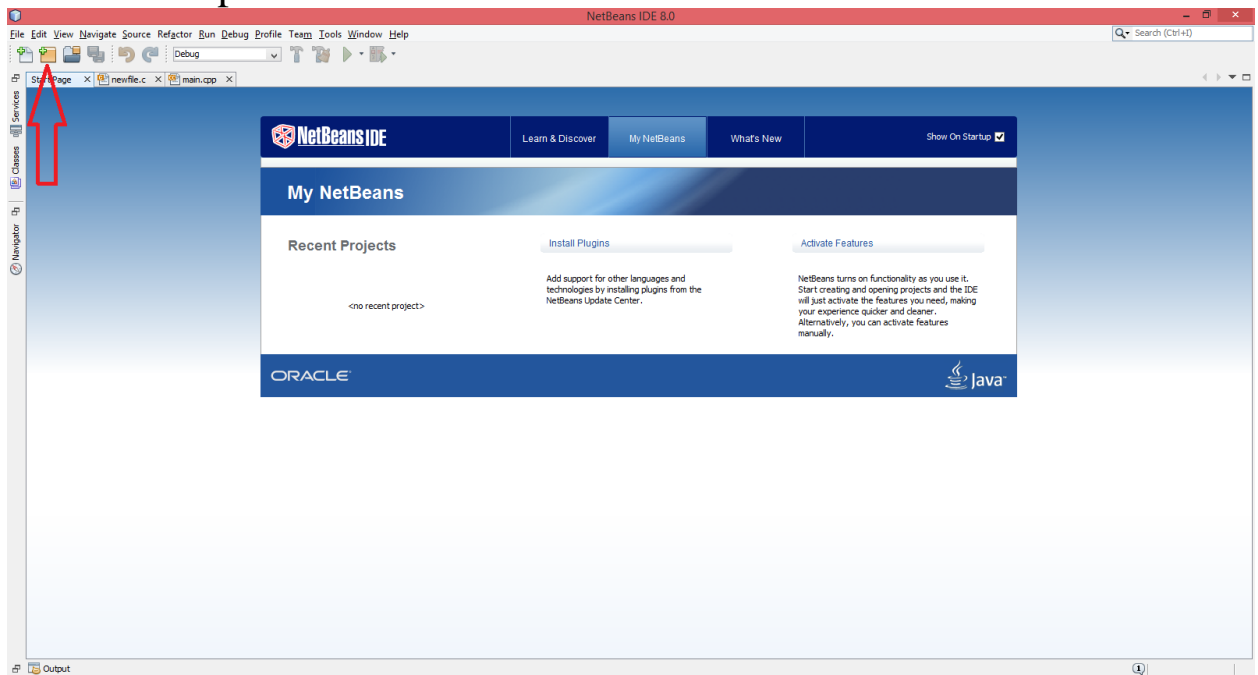
7. Choose setup based on computer specs.

The screenshot shows the Cygwin website homepage. The browser address bar displays `https://cygwin.com`. The page has a dark sidebar with navigation links for 'Cygwin', 'Cygwin/X', 'Community', 'Documentation', and 'Related Sites'. The main content area has a large 'Cygwin' header and a sub-header 'This is the home of the Cygwin project'. Below this, there are sections for 'What... ..is it?' and '...isn't it?'. The 'What... ..is it?' section lists Cygwin as a large collection of GNU and Open Source tools and a DLL (cygwin1.dll) providing POSIX API functionality. The '...isn't it?' section lists it as a way to run native Linux apps on Windows. A red circle highlights the text: 'Install it by running `setup-x86.exe` (32-bit installation) or `setup-x86_64.exe` (64-bit installation)'. Below this, there is a section for 'Current Cygwin DLL version' and a note that individual packages are updated separately from the DLL.

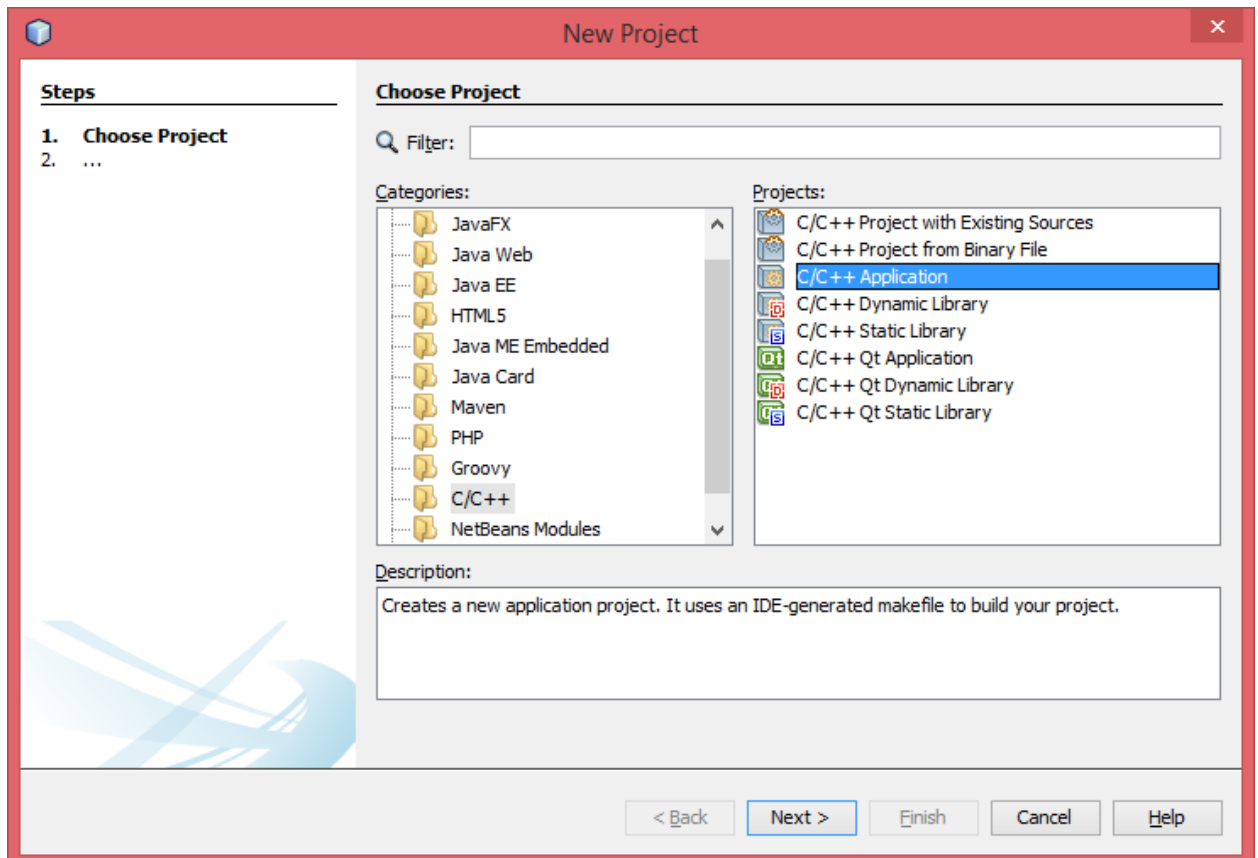
8. Run the `setup.exe` program. Accept the defaults until you reach the Select Your Internet Connection page. Select the option on this page that is best for you. Click Next.
9. On the Choose Download Site page, choose a download site you think might be relatively close to you. Click Next.
10. On the Select Packages page you select the packages to download. Click the + next to Devel to expand the development tools category. You may want to resize the window so you can see more of it at one time.
11. Select each package you want to download by clicking the Skip label next to it. At a minimum, select `gcc-core`: C compiler, `gcc-g++`: C++ compiler, `gdb`: The GNU Debugger, and `make`: the GNU version of the 'make' utility.
12. Now add the Compiler directory to your path:
 - a. Open the Control Panel (Start > Settings > Control Panel) and double-click the System program.
 - b. Select the Advanced tab and click Environment Variables.
 - c. In the System Variables panel of the Environment Variables dialog, select the `Path` variable and click Edit.
 - d. Add the path to the `cygwin-directory\bin` directory to the `Path` variable, and click OK. By default, `cygwin-directory` is `C:\cygwin`. Directory names must be separated with a semicolon.

e. Click OK in the Environment Variables dialog and the System Properties dialog.

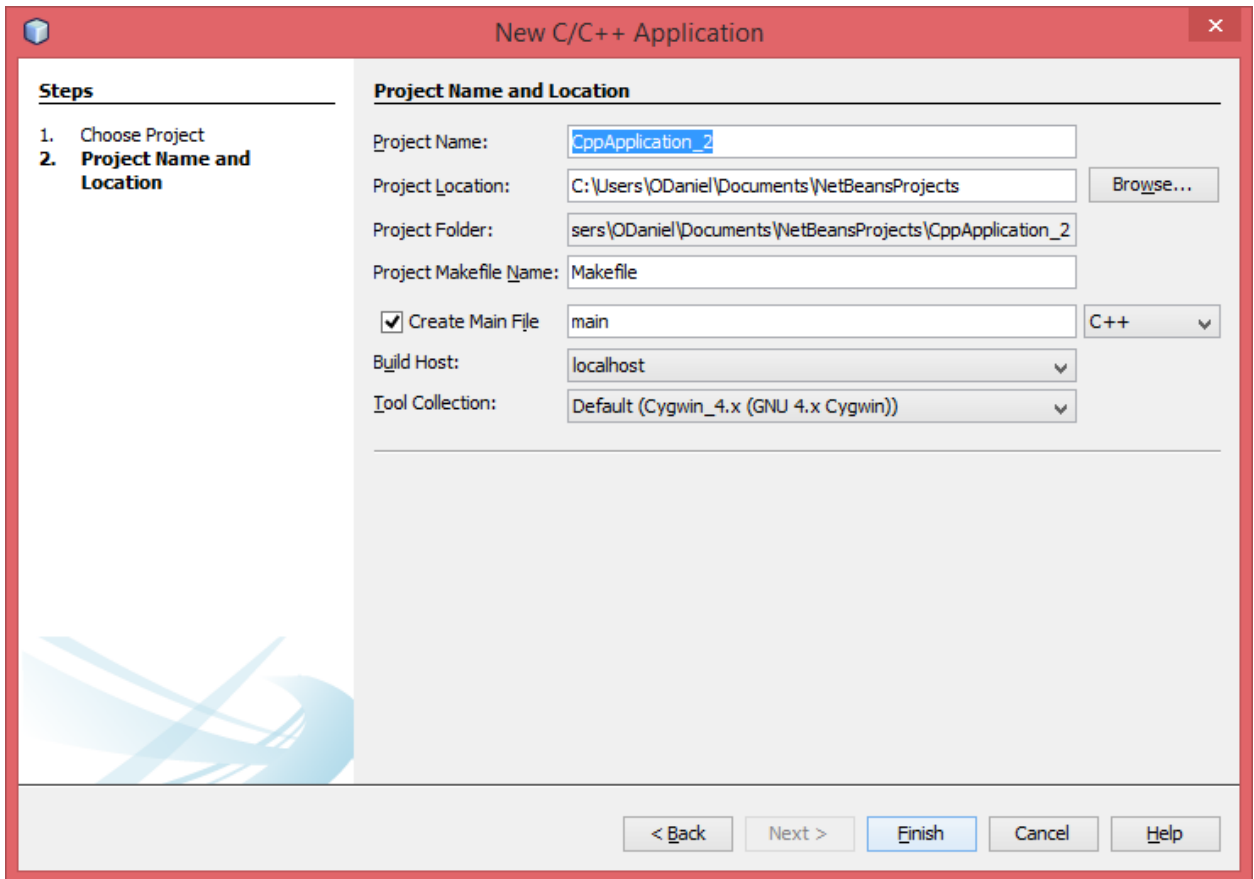
13. Now open Netbeans:



14. Click the yellow cube to create a new project.

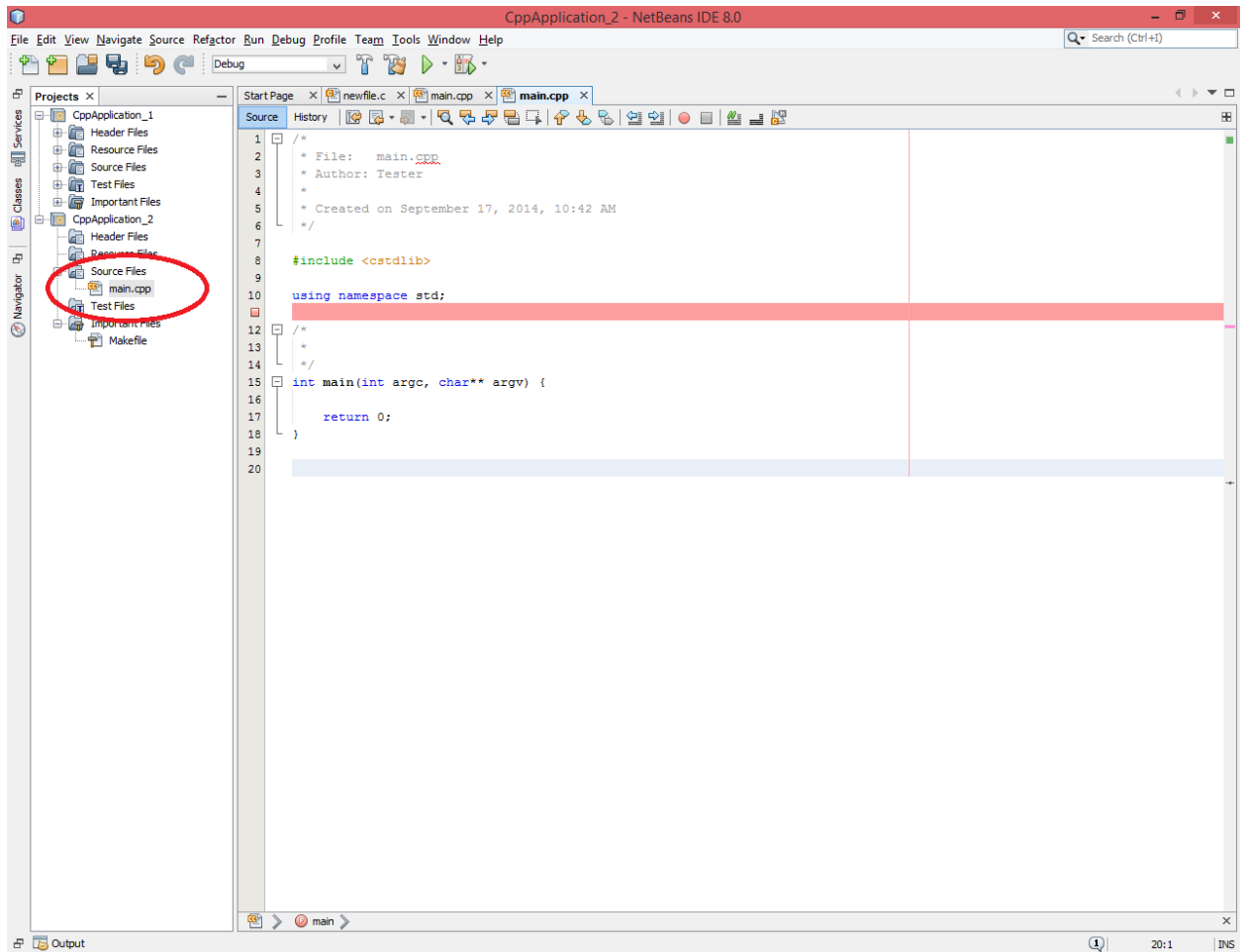


15. Choose what type of project you want. For this example we'll do an Application.



16. Name your project and click FINISH.

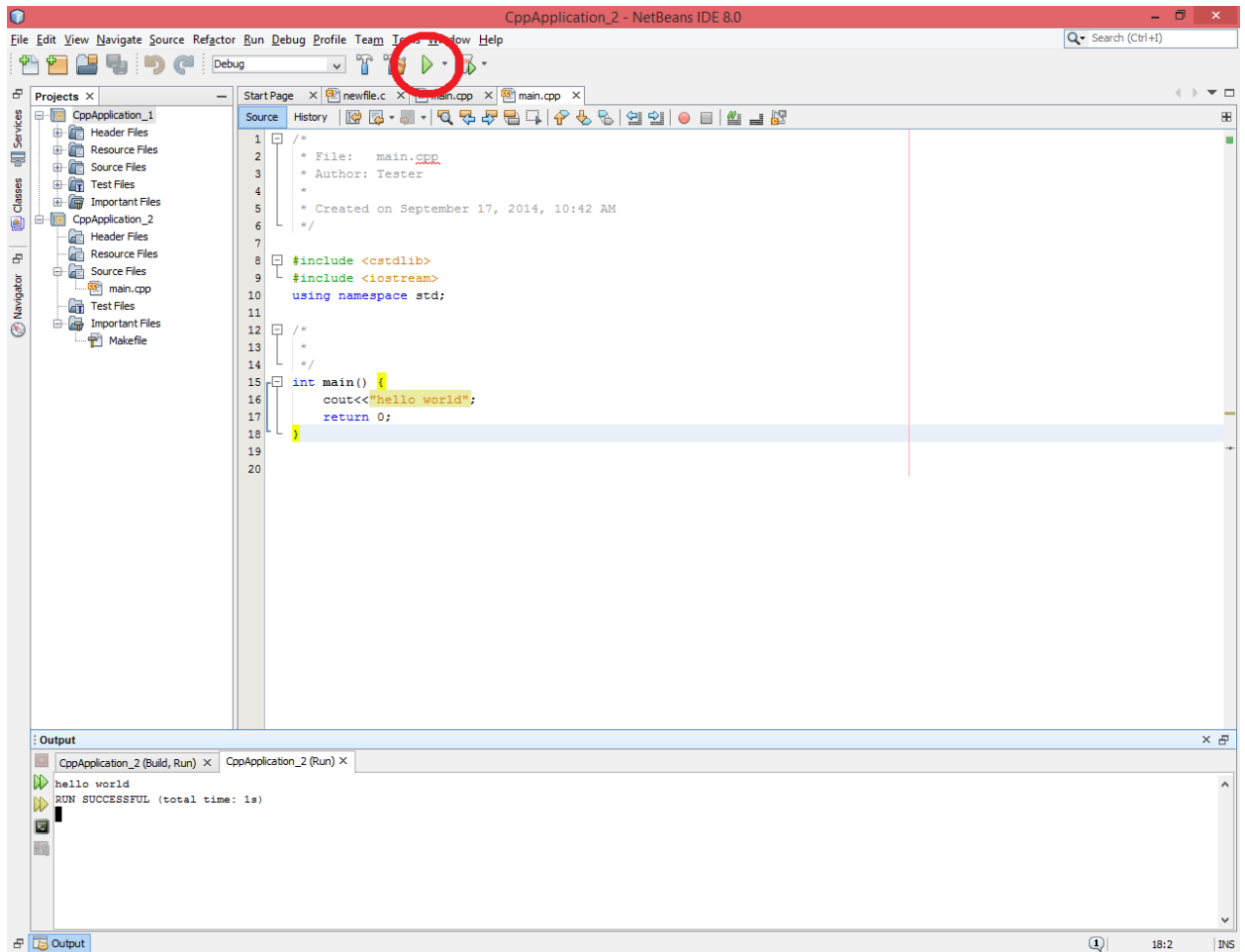
17. Project opens with a set main.cpp file to work in.



18. Try the following code and click the Green Triangle to run.

```
#include <cstdlib>
#include <iostream>
using namespace std;

/*
 *
 */
int main() {
    cout<<"hello world";
    return 0;
}
```



19.If you receive an error "Unable to resolve identifier cout" then right click the project title > Code Assistance > Reparse Project

